

EVERYTHING DiSC® WORKPLACE™ VIRTUAL SHOWCASE



High-performing organizations depend on effective working relationships. *Everything DiSC® Workplace™* can help.

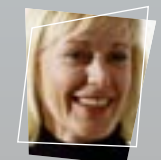
Using DiSC®, a powerful yet easy-to-use learning model, your employees will learn to understand and appreciate their personal priorities and the priorities of others. This understanding allows them to **connect better with their colleagues**, improving the quality of workplace relationships — one relationship at a time.

Our Virtual Showcase gives you the opportunity to experience *Everything DiSC Workplace* and see if it's right for your organization. **From the comfort of your own office** you'll get insider information on an easy-to-use program that helps you **create productive and effective working relationships — now.**

WHY ATTEND?

As an attendee you'll receive:

- Your own **personalized *Everything DiSC Workplace Profile***. This 20-page report gives you insight into your workplace priorities.
- **Expert information** from a member of Inscape Publishing's senior executive team.
- Virtual experience with *Everything DiSC Workplace* from a learner's perspective by viewing **all-new workplace-specific video**, and reviewing classroom activities



EVERYTHING DiSC® WORKPLACE™ VIRTUAL SHOWCASE



EVERYTHING DiSC® WORKPLACE™ VIRTUAL SHOWCASE DATES AND TIMES

July 15, 11 am to 12:30 pm CDT

July 21, 11 am to 12:30 pm CDT

July 23, 11 am to 12:30 pm CDT

HOW TO REGISTER

To register, contact your Authorized Inscape Distributor. See below for contact information. The fee to attend the *Everything DiSC Workplace Virtual Showcase* is \$30 per participant. No refunds will be given to cancellations or no-shows.

SYSTEM REQUIREMENTS

The *Everything DiSC Workplace Virtual Showcase* is a webinar. You'll need a phone line and a computer with high-speed internet access.



For more information, contact:



Christine R Gatti
CRG Associates
167 Cedar St
Ashland, MA 01721-1975
(508) 881-9364
chris@crgassociates.com
www.crgassociates.com